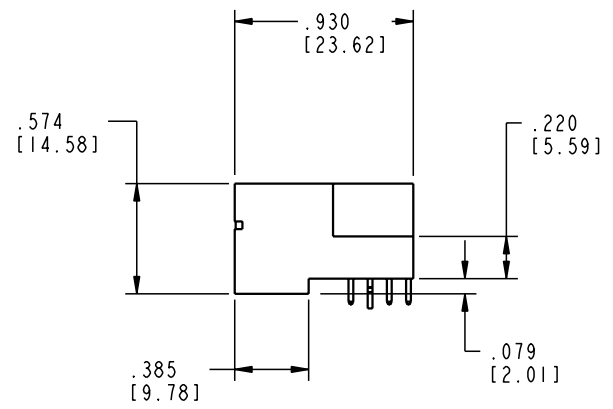
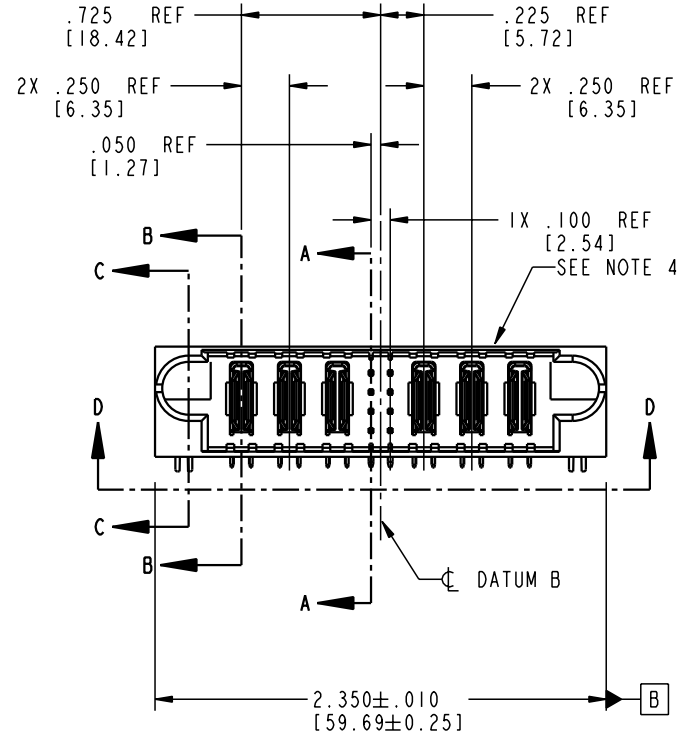
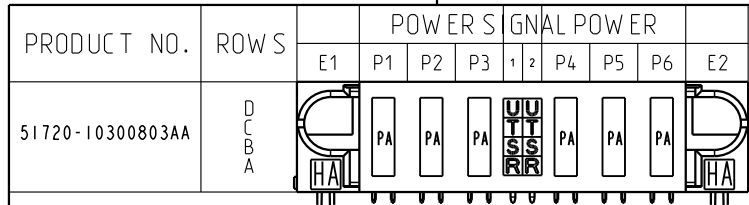


Tous droits strictement réservés. Reproduction ou communication o des tiers interdite sous quelque forme que ce soit sans autorisation écrite du propriétaire. Propriété de c FCI. Droits de reproduction FCI.



All rights strictly reserved. Reproduction or issue to third parties in any form whenever is not permitted without written authority from the proprietor. Property of FCI. Copyright FCI.



CODE	DIM "M" MATING LENGTH	CONTACT TYPE
R	.270 [6.86]	SIGNAL
S	.270 [6.86]	SIGNAL
T	.270 [6.86]	SIGNAL
U	.270 [6.86]	SIGNAL
PA	N/A [N/A]	POWER
HA	N/A [N/A]	HOLD-DOWN

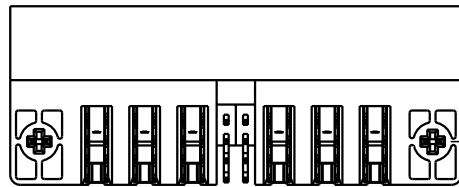
mat'l code				SEE NOTE 2		tolerances unless otherwise specified		CUSTOMER		ELECTRONICS www.fciconnect.com	
ltr	ecn no.	dr	date	linear	.XX±.01/0.XX±0.3		COPY		title 3P + 8S + 3P RIGHT ANGLE SOLDER HEADER		
A	V12484	JRW	10/11/01		.XXX±.005/0.XX±0.13		projection		product family PwrBlade code 213		
B	V12844	DAI	12/27/01		.XXX±.0020/0.XX±0.051		INCH/MM scale 1:1		size dwg no 51720-10300803AA sheet 1 of 4		
sheet index		revision sheet	B 1	B 2	B 3	B 4					

1 | 2 Pro/E 3 | cage code 22526 4

Tous droits strictement réservés. Reproduction ou communication o des tiers interdite sous quelque forme que ce soit sans autorisation écrite du propriétaire. Propriete de c FCI. Droits de reproduction FCI.

All rights strictly reserved. Reproduction or issue to third parties in any form, whatever is not permitted without written authority from the proprietor. Property of FCI. Copyright FCI.

PRODUCT NUMBER
51720-10300803AA



SECTION D-D

2X .705 REF
[17.91]

.025 REF TYP
[0.64]

.100 REF TYP
[2.54]

.058 REF
[1.47]

.325 REF
[8.26]

DIM "M" ±.010
[±0.25]

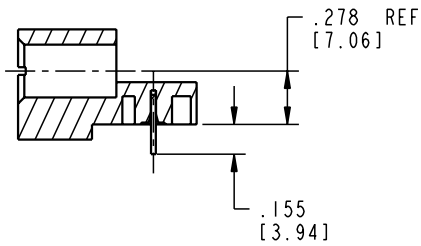
.135±.020
[3.43±0.5]

.025 REF TYP
[0.64]

.605 REF
[15.37]

.100 REF TYP
[2.54]

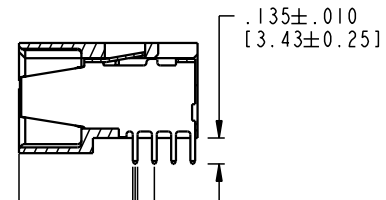
SECTION A-A



SECTION C-C

.278 REF
[7.06]

.155
[3.94]



SECTION B-B

.135±.010
[3.43±0.25]

.025 REF TYP
[0.64]

.605 REF
[15.37]

.100 REF TYP
[2.54]

mat'l code				SEE NOTE 2		tolerances unless otherwise specified		CUSTOMER		ELECTRONICS www.fciconnect.com	
ltr	ecm no.	dr	date	linear	.XX±.01/0.X±0.3		COPY		ELECTRONICS www.fciconnect.com		
B					projection	.XXX±.005/0.XX±0.13				title 3P + 8S + 3P	
				angles	.XXX±.0020/0.XXX±0.051				RIGHT ANGLE SOLDER HEADER		
				dr	J.WITMER	10/11/01	INCH/MM		product family PwrBlade		code
				engr	J.ALLISON	10/11/01			size		213
				chr	J.ALLISON	10/11/01	scale		A		sheet
				appd	J.ALLISON	10/11/01	1:1		51720-10300803AA		2 of 4
sheet index	revision sheet										

cage code 22526

Pro/E

PDM: Rev:B

STATUS: Released

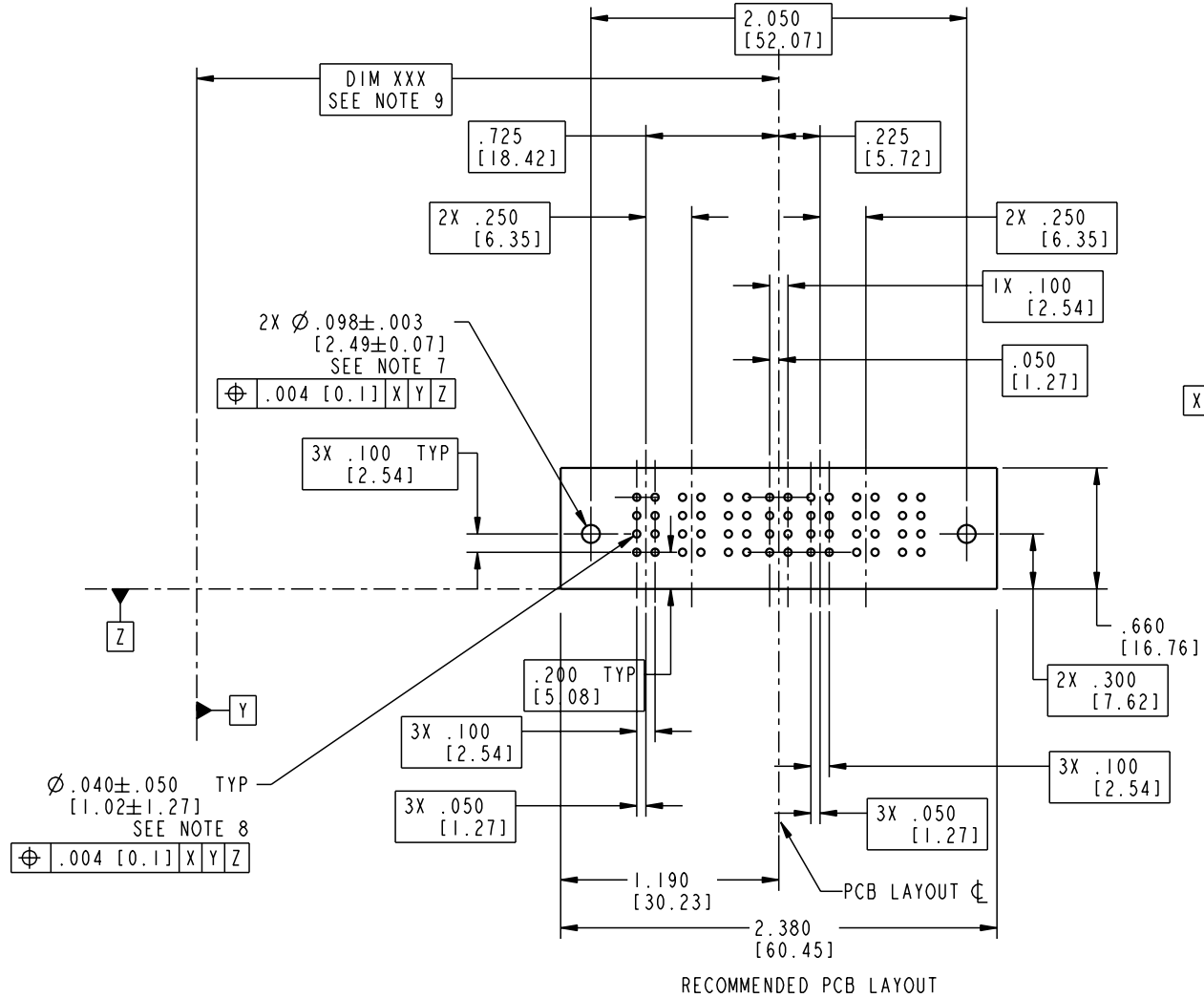
Printed: Aug 12, 2007

Tous droits strictement réservés. Reproduction ou communication o des tiers interdite sous quelque forme que ce soit sans autorisation écrite du propriétaire. Propriété de c FCI. Droits de reproduction FCI.

All rights strictly reserved. Reproduction or issue to third parties in any form whatever is not permitted without written authority from the proprietor. Property of FCI. Copyright FCI.



PRODUCT NUMBER
51720-10300803AA



mat'l code				SEE NOTE 2		tolerances unless otherwise specified		CUSTOMER		ELECTRONICS www.fciconnect.com	
ltr	ecn no.	dr	date	linear	.XX±.01/0.XX±0.3	projection	COPY		title		
B				angles	.XXX±.005/0.XX±0.13		3P + 8S + 3P		RIGHT ANGLE SOLDER HEADER		
				dr	.XXX±.0020/0.XXX±0.051		product family		PwrBlade		code
				engr	J.WITMER 10/11/01	scale	size		dwg no		213
				chr	J.ALLISON 10/11/01	1:1	A		51720-10300803AA		sheet
				appd	J.ALLISON 10/11/01						3 of 4
sheet index	revision sheet										

Pro/E

cage code 22526

PDM: Rev:B

STATUS: Released

Printed: Aug 12, 2007

Tous droits strictement réservés. Reproduction ou communication o des tiers interdite sous quelque forme que ce soit sans autorisation écrite du propriétaire. Propriete de c FCI. Droits de reproduction FCI.



All rights strictly reserved. Reproduction or issue to third parties in any form, whenever is not permitted without written authority from the proprietor. Property of FCI. Copyright FCI.

PRODUCT NUMBER
51720-10300803AA

NOTES:

1. DIMENSIONS AND TOLERANCES ARE IN ACCORDANCE WITH ASME Y14.5M, 1994 UNLESS OTHERWISE SPECIFIED.

CONNECTORS NOTES:

② HOUSING MATERIAL: UL 94 V-0 GLASS FILLED HIGH TEMP THERMO PLASTIC
POWER CONTACT MATERIAL: COPPER ALLOY
SIGNAL PIN MATERIAL: COPPER ALLOY

3. PLATING:

SIGNAL PINS: 30u"/0.76um Au OVER 50u"/1.27um Ni
POWER CONTACTS: 50u"/1.27um Ni UNDER ALL WITH 30u"/0.76um Au ON CONTACT AREA AND SnPb ON PCB INTERFACE

④ "MANUFACTURER" NAME, P/N, AND DATE CODE TO APPEAR ON THIS SURFACE.

5. PRODUCT SPECIFICATION GS-12-149.

PCB - NOTES:

6. ALL HOLE DIAMETERS ARE FINISHED HOLE SIZE.

⑦ HOLD DOWN THROUGH HOLES ARE UNPLATED.

⑧ $\varnothing .0453 \pm 0.0010$ [1.151 \pm 0.025] DRILLED HOLES PLATED WITH 0.0003 [0.008] MIN SnPb OVER .001 [0.03] TO .003 [0.08] Cu PLATING TO ACHIEVE $\varnothing .040 \pm .003$ [1.02 \pm .07] HOLE.

⑨ "DIM XXX" TO BE DETERMINED BY THE CUSTOMER.

mat'l code				SEE NOTE 2		tolerances unless otherwise specified		CUSTOMER		ELECTRONICS www.fciconnect.com	
ltr	ecn no.	dr	date	linear	.XX±.01/0.X±0.3		COPY			title	
B					.XXX±.005/0.XX±0.13		INCH/MM			3P + 8S + 3P	
				angles	.XXX±.0020/0.XXX±0.051				RIGHT ANGLE SOLDER HEADER		
				dr	J.WITMER	10/11/01	product family		PwrBlade	code	
				engr	J.ALLISON	10/11/01	size	dwg no	213		
				chr	J.ALLISON	10/11/01	A		51720-10300803AA		
				appd	J.ALLISON	10/11/01	scale		4 of 4		
sheet index		revision sheet									

1 | 2

Pro/E

3 |

cage code 22526

4

PDM: Rev:B

STATUS: Released

Printed: Aug 12, 2007